



**Austin Neighborhood Council**  
*Phase I Update*  
June 28, 2017



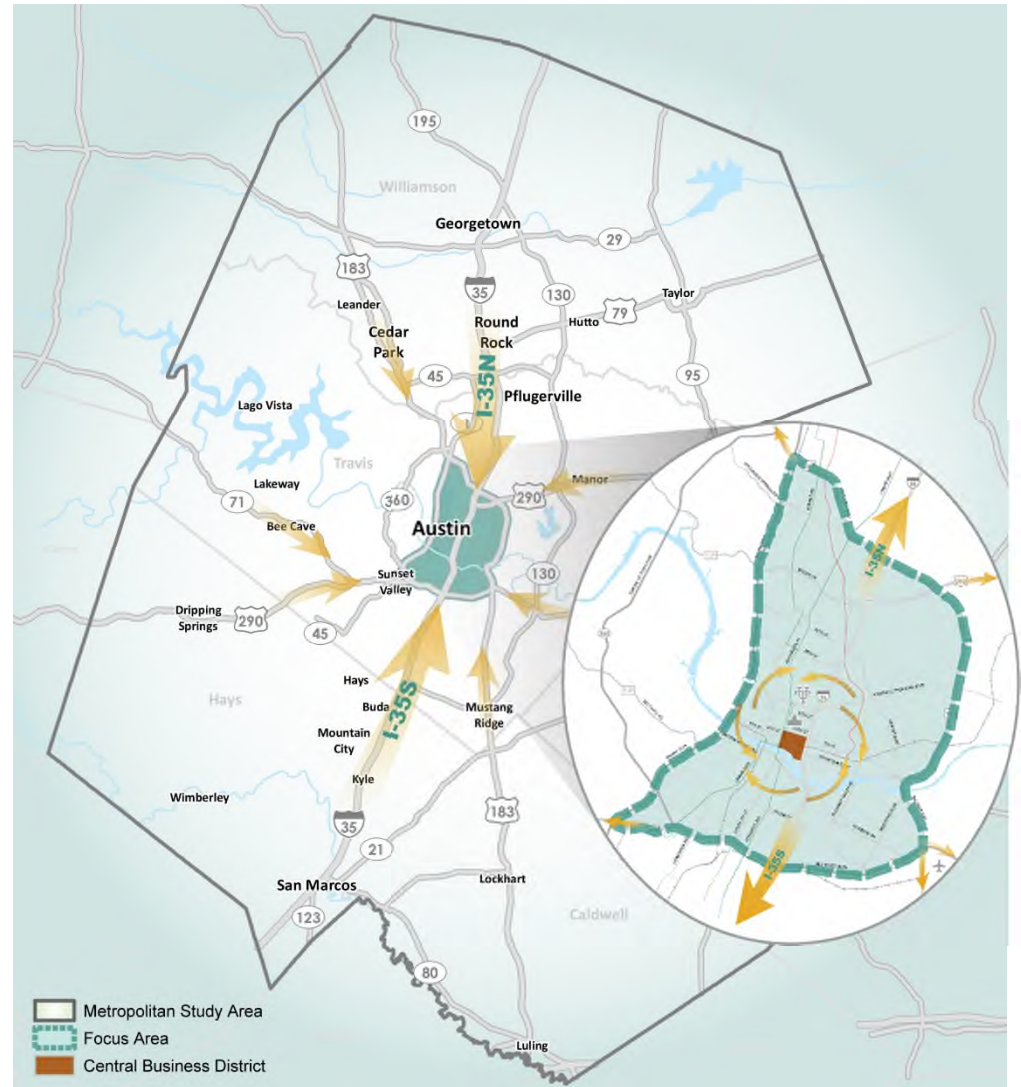


## What are we doing?

- Refining Project Connect Plan
- Coordinating with Austin Strategic Mobility Plan

## Why?

- Select high-capacity transit solutions for travel into, out of, and within central Austin from surrounding metro region

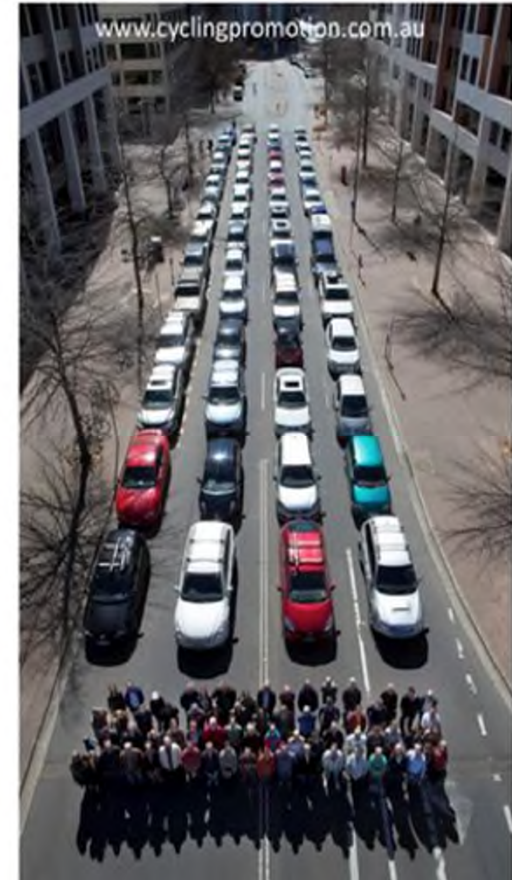




Bus



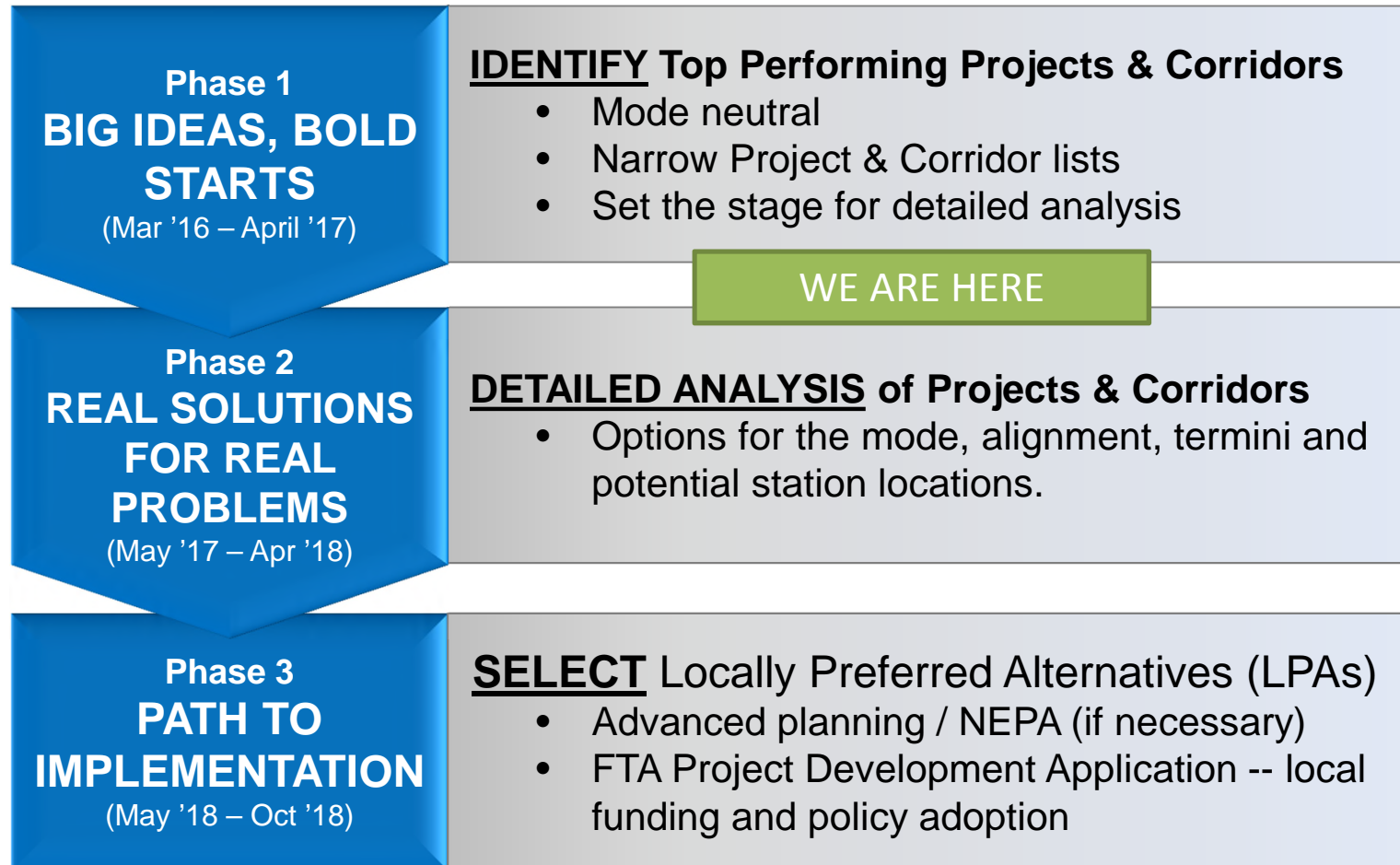
Private Car



TNC Car



# Phased Approach to Project Development







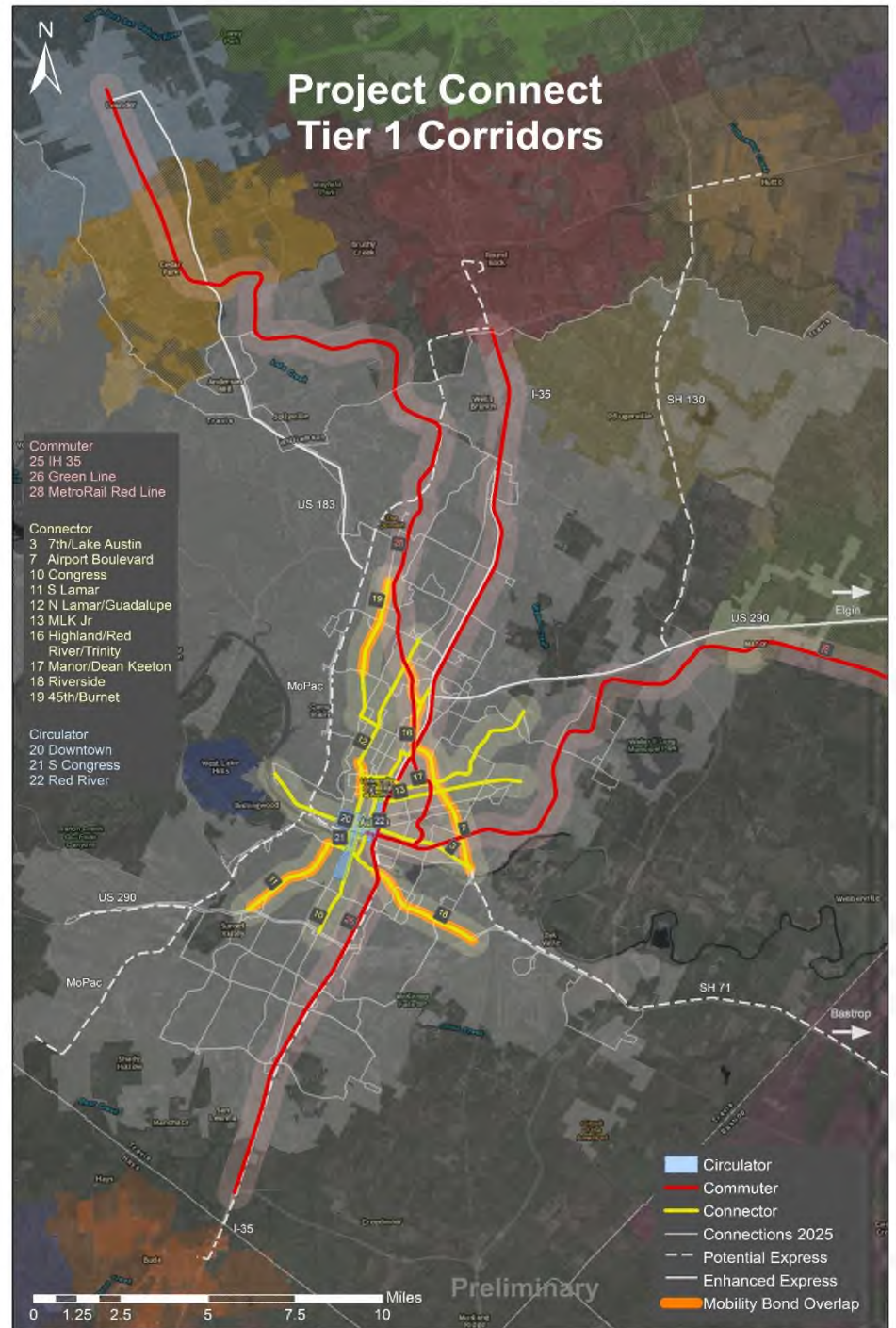
WE ARE HERE

Public Involvement



# Phase 1: Preliminary Results (Investment Corridors) – Region

-  COMMUTERS
-  CONNECTORS
-  CIRCULATORS
-  POTENTIAL EXPRESS



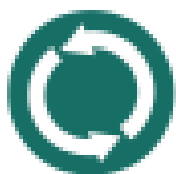


## Phase I Recommendations- Investment Corridors



Commuter

- IH 35
- Red Line (double track)
- Green Line



Circulator

- Downtown Circulator
- Red River Circulator
- S Congress Circulator



Connector

- N Lamar/Guadalupe
- Highland/Red River/Trinity
- Congress
- Riverside
- Martin Luther King Jr
- Airport Blvd
- 7<sup>th</sup>/Lake Austin
- Manor/Dean Keeton
- 45<sup>th</sup>/Burnet
- S Lamar



## Phase I Recommendations- Enhancement Projects



MetroRapid

- Guadalupe/Lavaca - transit signal priority
- Guadalupe/Lavaca - extend existing transit priority lanes
- S 1st St - priority treatments
- W MLK Jr Blvd (Guadalupe/Lavaca) - intersection upgrades



MetroExpress

- W 5th St & W Cesar Chavez, Mopac to Guadalupe
- 183 N



MetroRail

- Rail station capacity projects

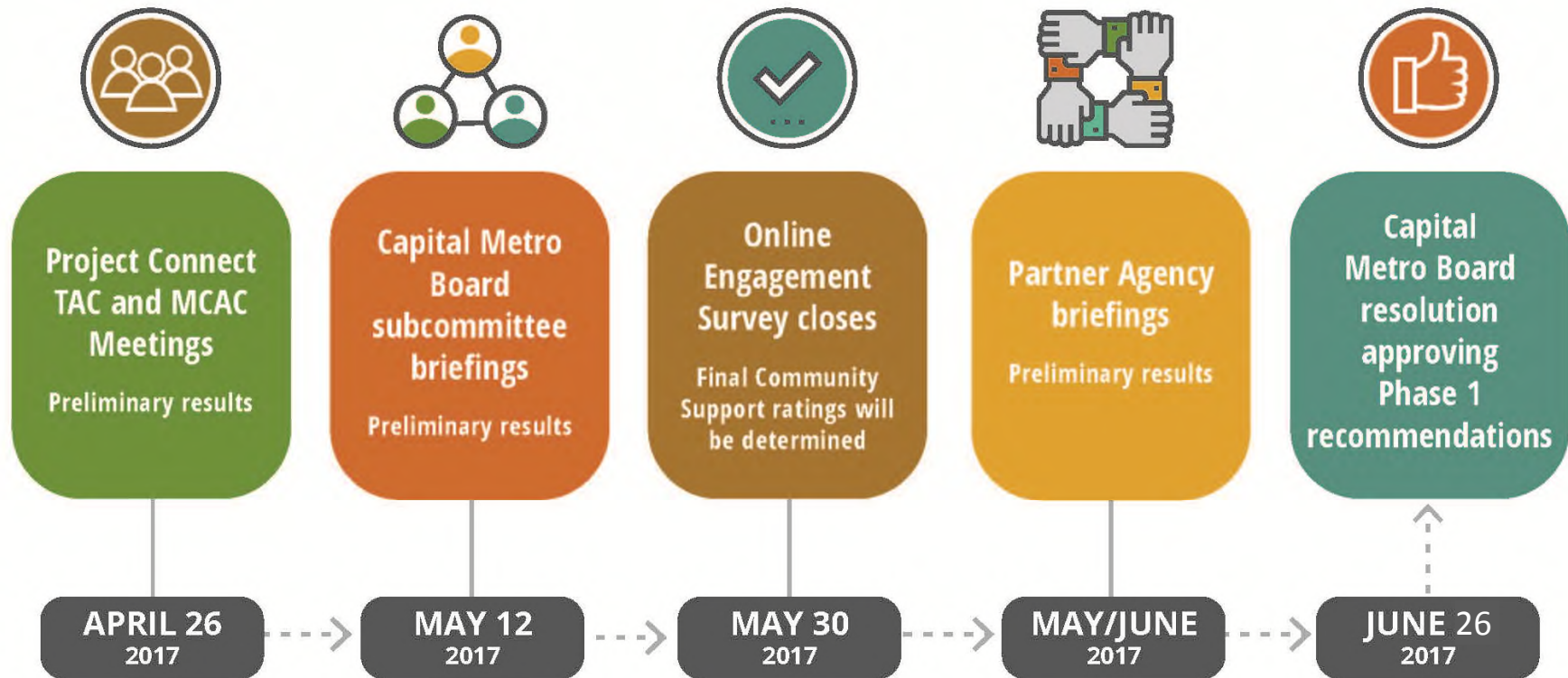


Mobility Hub

- W 4th St (Republic Square)
- W 4th Street
- North Lamar Transit Center
- W 4th St (DT MR Station)
- Leander Station
- Crestview
- Westgate



# Phase I Results & Recommendations- Process





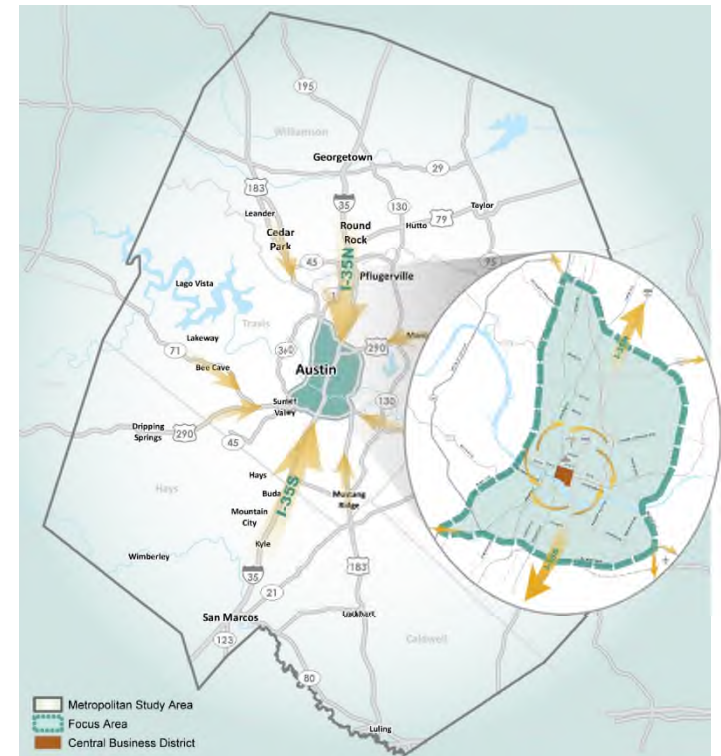


## Today's Status

- Phase One findings
- Continue coordination in Phase II

## Next Steps

- Initiate Phase II
- Begin detailed analysis of Investment Corridors and Enhancement Projects





## What's the Connection to Austin Neighborhoods?



### *Intended Outcomes*

- Economic opportunity and affordability
- Mobility and Access
- Public Health
- Community Equity



For more information, please see  
[www.projectconnect.com](http://www.projectconnect.com)

